



RACEPLUS

RAPID ASSESSMENT BY CARDIAC ECHO PLUS

RACE (Rapid Assessment by Cardiac Echo) is a transthoracic echocardiography (TTE) course specifically designed for the critical care and acute care physicians. Its objective is to equip physicians in these areas with the skills and knowledge to perform focused bedside TTE so that common cardiac and haemodynamic disorders can be identified quickly. There is a strong focus on HANDS-ON practice in this course.

DATE February, 8th - 9th 2020

COST \$1300.00 AUD

VENUE The Hunter Centre, Dunedin, Otago, NZ

FACULTY **Nepean Team**
Professor Anthony McLean,
NEPEAN Ms Iris Ting

FACULTY **Dunedin Hospital**
DUNEDIN Dr Markus Renner
Dr Chris Walker

COURSE CONTENT

- ✓ Left heart function
- ✓ Right heart function
- ✓ Pericardial effusion and cardiac tamponade
- ✓ Intravascular volume (fluid status) assessment

RACE PLUS

The RACEplus course is an extension of the RACE course and normally spans over 2 - 3 days. RACEplus covers the RACE content plus some advanced TTE and critical care ultrasound topics.

PROGRAMME

The content of RACEplus includes:

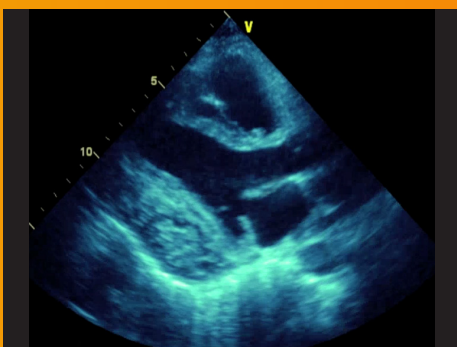
DAY 1: Basic (RACE) workshop which is suitable for physicians with little or no prior knowledge of TTE but wish to learn critical care TTE as an extension of their physical examination skills, plus

DAY 2: Advanced module that includes:

- ✓ Lung ultrasound
- ✓ Echo in hypotensive patients
- ✓ Case interpretation workshop

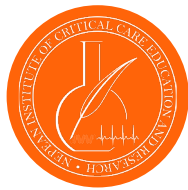
Conference Secretariat:
Ms. Novea Riley | E: novea.riley@niccer.org.au

Registration form available:
<http://www.niccer.org.au>



DISCUS
DUNEDIN INTENSIVE
CARE ULTRASOUND

COURSE PROGRAMME



RACEPLUS

RAPID ASSESSMENT BY CARDIAC ECHO PLUS

COURSE: RACE

CONFERENCE TIMETABLE

DAY 01 | SATURDAY | 8TH FEBRUARY

- 0830 Introduction to RACE
- 0845 Knobology and basic TTE views
- 0915 Demonstration: How to perform TTE?
- 0945 Hands-on I: Parasternal views**
- 1045 MORNING BREAK**
- 1100 Hands-on II: Apical and subcostal views**
Lecture:
1200 LV evaluation
RV evaluation
- 1300 LUNCH**
- 1330 Fluid status assessment
- 1415 Pericardial effusion and tamponade
- 1445 Demonstration/Case: Going through & interpreting RACE study
- 1530 Hands-on III: Performing RACE**
- 1545 AFTERNOON BREAK**
- 1630 Summary**
- 1700 Finish

DAY 02 | SUNDAY | 9TH FEBRUARY

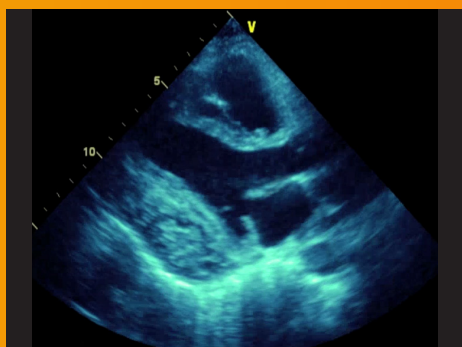
- 0830 Case study (2D and M-mode)
- 0900 Hands-on: Performing RACE**
- 1000 Echo in hypotensive patients
- 1030 MORNING BREAK**
- 1050 Hands-on: Student-directed**
- 1200 Lung ultrasound
- 1230 LUNCH**
- 1330 Hands-on**
- 1500 AFTERNOON BREAK**
- 1530 Case interpretation workshop
- 1645 Summary and evaluation
- 1700 Finish

Conference Secretariat:

Ms. Novea Riley | E: novea.riley@niccer.org.au

Registration form available:

<http://www.niccer.org.au>



DISCUS
DUNEDIN INTENSIVE
CARE ULTRASOUND