

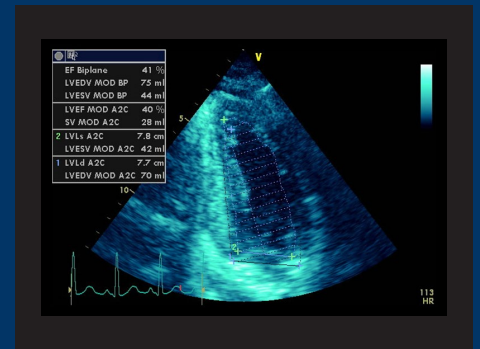
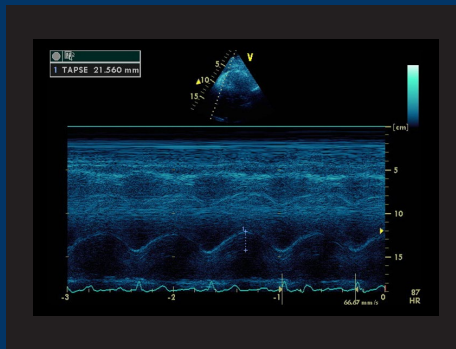
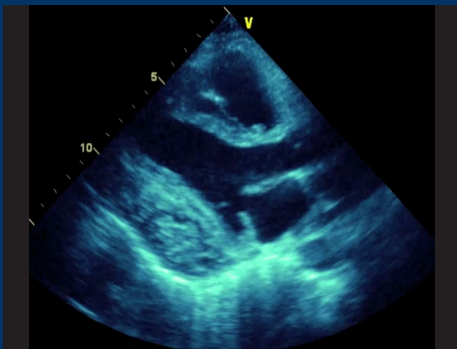
# FOCUSED ECHOCARDIOGRAPHY COURSE

# RACE

RAPID ASSESSMENT BY CARDIAC ECHO



RACE (rapid assessment by cardiac echo) is a well-established transthoracic echo (TTE) course run in many countries around the world. It is specifically designed for critical care physicians to equip them with skills and knowledge to perform focused TTE studies so that common cardiac and haemodynamic disorders (e.g. shock) can be identified quickly.



EF Biplane	41 %
LVEDV MOD BP	75 ml
LVESV MOD BP	44 ml
LVEF MOD A2C	40 %
SV MOD A2C	28 ml
2 LVls A2C	7.8 cm
LVESV MOD A2C	42 ml
1 LVLd A2C	7.7 cm
LVEDV MOD A2C	70 ml

## DATE

Monday, 14th  
October 2019

## COST

\$700.00

## VENUE

Melbourne Convention  
Exhibition Centre

## FACULTY

Dr Sam Orde,  
Professor Ian Seppelt  
and Professor  
Anthony McLean

## AUDIENCE

- Critical care doctors keen to learn focused cardiac ultrasound
- Those undergoing CICM training or embarking on CCPU
- **No previous experience in ultrasound required**

## PROGRAM

- One-day course of lectures and hands-on practice
- Includes:
  - ✓ 4 hour hands-on practice on models and echo simulators
  - ✓ Book: 'Critical Care Ultrasound manual' by Mclean & Huang
- Expert faculty with small group numbers

Credited for ASUM CCPU training, and in association with the World Congress of Intensive Care 2019.

WORLD  
CONGRESS  
OF INTENSIVE CARE

