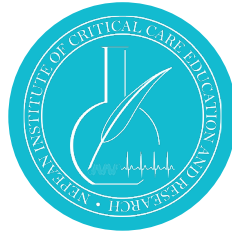


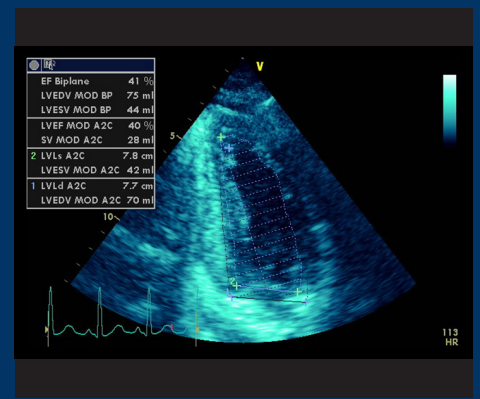
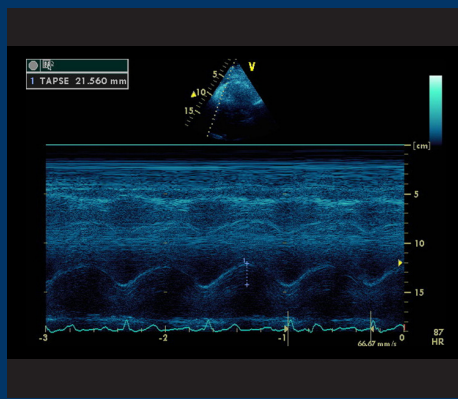
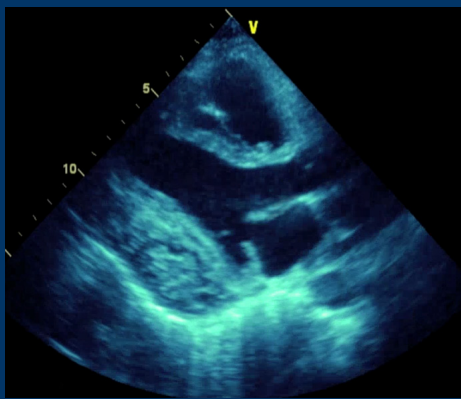
FOCUSED ECHOCARDIOGRAPHY COURSE

RACE

RAPID ASSESSMENT BY CARDIAC ECHO



RACE (rapid assessment by cardiac echo) is a well-established transthoracic echo (TTE) course run in many countries around the world. It is specifically designed for critical care physicians to equip them with skills and knowledge to perform focused TTE studies so that common cardiac and haemodynamic disorders (e.g. shock) can be identified quickly.



DATE Wednesday,
5th June 2019

COST \$700.00

VENUE Cairns Convention
Centre, Meeting Room
5 and 6

AUDIENCE

- Critical care doctors keen to learn focused cardiac ultrasound
- Those undergoing CICM training or embarking on CCPU
- **No previous experience in ultrasound required**

PROGRAM

- One-day course of lectures and hands-on practice
- Includes:
 - ✓ 4 hour hands-on practice on models and echo simulators
 - ✓ Book: 'Critical Care Ultrasound manual' by Mclean & Huang
- Expert faculty with small group numbers

Credited for CICM
and ASUM CCPU
training



CICM 2019 ASM
TRAUMA
A Crash Course

TRAINEE SYMPOSIUM
AND ICU UPDATE
THURSDAY 6 JUNE

ASM
CONFERENCE
FRIDAY 7 - SUNDAY 9 JUNE

