

## PROGRAM FOR RACE PLUS (RAPID ASSESSMENT BY CARDIAC ECHO)



# CRITICAL CARE ECHO COURSES AT LEURA

LOCATION: THE FAIRMONT RESORT, LEURA

### COURSE: RACE PLUS (BEGINNERS) CONFERENCE TIMETABLE

SATURDAY & SUNDAY | 14TH - 15TH | SEPTEMBER 2019  
WENTWORTH & OXLEY ROOMS, LOWER LEVEL 1

#### DAY 01 | SATURDAY | 14TH SEP 2019

- 0830 Introduction
- 0910 Knobology
- 0930 Basic TTE Views
- 1030 **MORNING BREAK**
- 1045 Hands-on: Apical and Subcostal view
- 1145 LV Evaluation
- 1215 RV Evaluation
- 1300 **LUNCH**
- 1400 Pericardial Effusion/Tamponade
- 1420 Fluid Status Assessment
- 1445 Demonstration Case
- 1500 Hands on: Performing RACE
- 1545 **AFTERNOON BREAK**
- 1600 Hands-on: Performing RACE
- 1645 Summary
- 1700 **FINISH | COCKTAILS**  
*Beverages & Chefs Selection Canapes*

#### DAY 02 | SUNDAY | 15TH SEP 2019

- 0900 Case Study 01
- 0930 Hands-On
- 1030 **MORNING BREAK**
- 1045 Case Study 02
- 1115 Hands-On
- 1230 **LUNCH**
- 1330 Lung Ultrasound
- 1400 Basic Doppler Theory
- 1430 Case Studies
- 1515 **AFTERNOON BREAK**
- 1530 Case Study 03
- 1630 Close
- 1830 **DINNER AT THE CARRINGTON HOTEL, KATOOMBA:**  
*Transport to be organised to and from via the bus from the Fairmont Resort at 6pm.*

#### SPECIAL EVENT | COCKTAILS

Beverages & Chefs Selection Canapes

#### SPECIAL EVENT | DINNER

Dinner at the Carrington Hotel, Katoomba. Please register (STRICT RSVP) for dinner - if you are taking a partner please include \$100 for your partner. Transport to be organised to and from via the bus from the Fairmont Resort at 6 pm.

#### INVITED FACULTY:

International | Professor Philippe Vignon | France  
National | Dr Faraz Pathan | Sydney

#### FACULTY:

Anthony McLean, Stephen Huang, Iris Ting,  
Sam Orde, Stan Yastrebov

For more information please visit: [www.niccer.org.au](http://www.niccer.org.au)

## PROGRAM FOR ECHO HAEMODYNAMICS



# CRITICAL CARE ECHO COURSES AT LEURA

LOCATION: THE FAIRMONT RESORT, LEURA

## COURSE: ECHO HAEMODYNAMICS CONFERENCE TIMETABLE

SEPTEMBER, 2019  
SUNDAY, MONDAY & TUESDAY | 15TH - 17TH

### DAY 01 | SUNDAY | 15TH SEP 2019

- 1330 Applications in Doppler Theory | **Stephen Huang**  
1400 Hands-on Doppler  
1500 TDI | **Sam Orde**  
1530 Valve Assessment | **Vijeth Bhatt**  
1630 Close

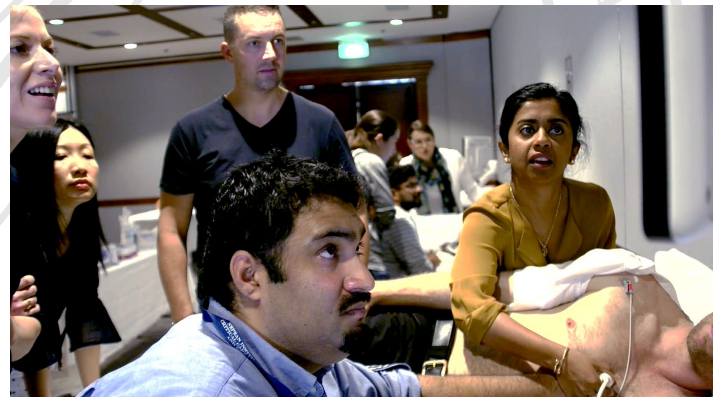
### DAY 02 | MONDAY | 16TH SEP 2019

- 0900 Fluid Management in Shock | **Philippe Vignon**  
0940 Cardiac magnetic Imaging in the ICU patient | **Faraz Pathan**  
1015 **BREAK**  
1045 Live streaming form Nepean Hospital ICU | **Sam Orde**  
1200 Noninvasive measurement LVDP | **Anthony McLean**  
1230 **LUNCH**  
1330 Septic cardiomyopathy | **Philippe Vignon**  
1400 Future of noninvasive cardiac imaging in critically ill patients | **Faraz Pathan**  
1430 Debate: There should be an intermediate level of Critical Care echo certification and competency (Pro / Con) | **Pro: Stan Yastrebov / Con: Sam Orde**  
1515 **BREAK**  
1530 Insights into ventilator weaning failure | **Philippe Vignon**  
1600 Assessment of RV function | **Sam Orde**  
1630 Facts or artefacts | **Philippe Vignon**

### DAY 03 | TUESDAY | 17TH SEP 2019

All case presentations or case presentations and specific topic discussion by:

- Stan Yastrebov,
- Mate Rudas,
- Sam Orde,
- Yang Yang



**INVITED FACULTY:**  
**International | Professor Philippe Vignon | France**  
**National | Dr Faraz Pathan | Sydney**

**FACULTY:**  
**Anthony McLean, Stephen Huang, Iris Ting,**  
**Sam Orde, Stan Yastrebov**

For more information please visit: [www.niccer.org.au](http://www.niccer.org.au)